

Hudson River
PCBs SUPERFUND SITE



Hudson River PCBs Superfund Site
2011 Dredging Season Project Update
December 8, 2011

2011 Dredging Summary



- Dredging occurred between June 6 and November 8, 2011
 - Delayed start due to elevated river flows in Spring 2011
- Dredging completed in Certification Units (CUs) 9 – 16 and 19 – 25
- Backfilling / capping operations completed November 18, 2011
- Removed more than 363,000 cubic yards (C.Y.) of sediment from 15 CUs
- Improved compliance with Engineering Performance Standards and Quality of Life Performance Standards



Resuspension Summary



- Phase 2 Resuspension Engineering Performance Standard comprised of two components:
 - 500 ng/L Concentration Standard: No exceedances at any far-field location
 - Load Standard: In-compliance at Waterford far-field location throughout 2011
- PCB monitoring program and “special studies” to assess resuspension and re-deposition
 - Will help to refine BMPs and identify necessary operational modifications going forward



Residual Summary

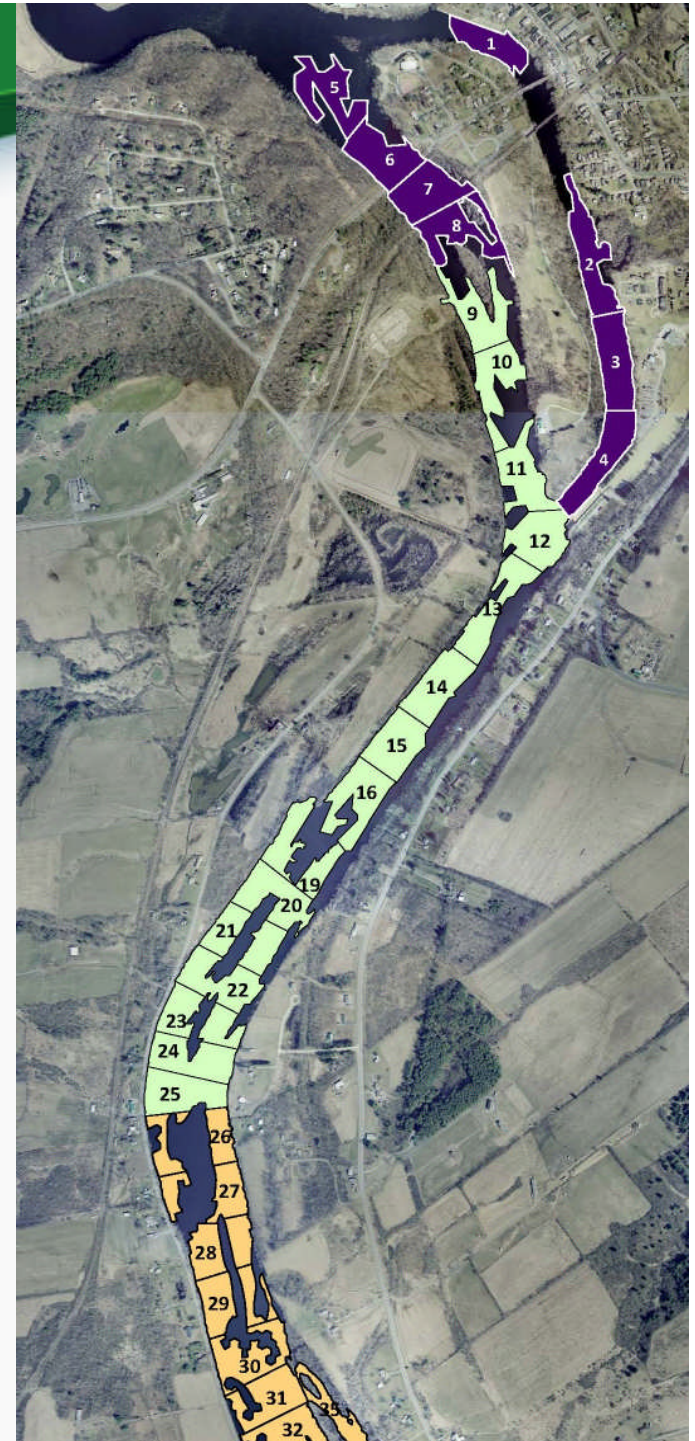


- 1 ft. backfill layer placed in all areas dredged
- In some locations capping of river sediments is necessary
- Phase 2 Residual Engineering Performance Standard specifies a limit on the extent of capping that is allowed:
 - Counted Area Capped to Date: 3.05% (11% allowed)
 - Counted Area with “Inventory” Capped to Date: 0% (3% allowed)
 - Non-Counted Area Capped to Date: 3.12% (Not tracked per Residual Standard)
- Only two nodes capped within the Navigation Channel



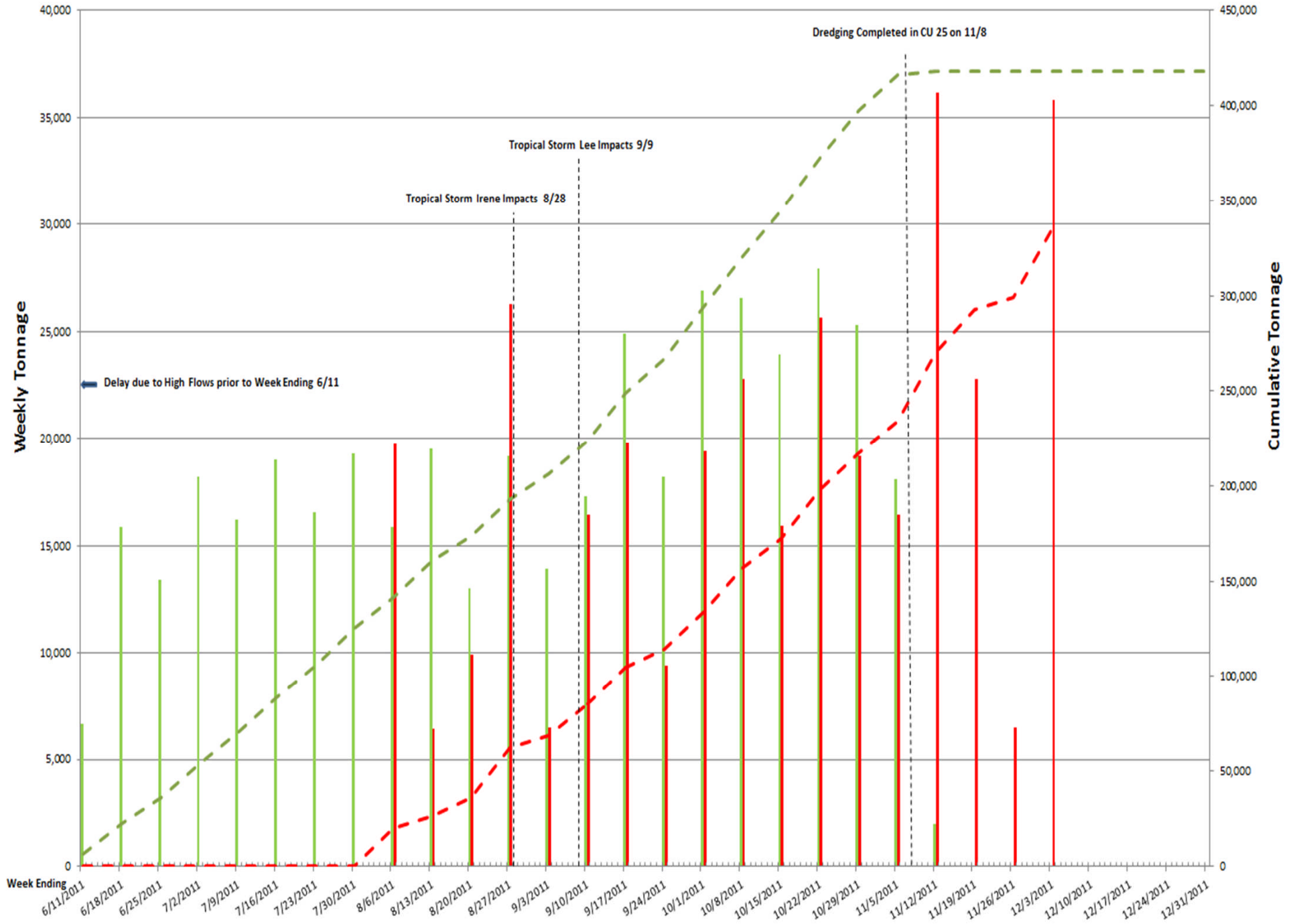
Productivity Summary

- Phase 2 Productivity Engineering Performance Standard specified a target removal volume for each dredging season of 350,000 C.Y. of sediment
- In 2011 season, more than 363,000 C.Y. of sediment was removed
 - Approx. 16,000 +/- C.Y. dredged per week
 - Dredged approx. 75 acres



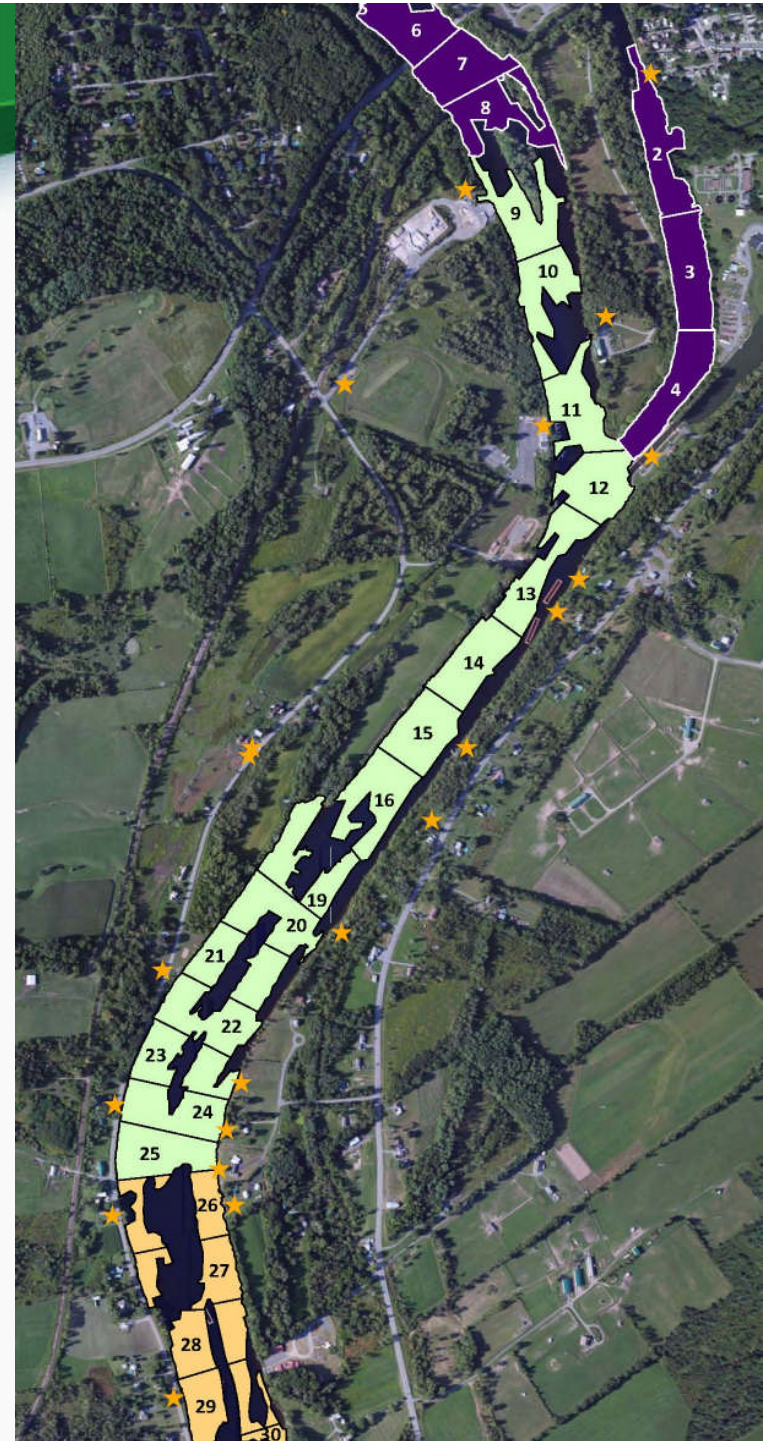
Comparison of Weekly Tonnage Dredged and Shipped Off-Site (2011)

UPDATED AS OF 12/06/2011



Quality of Life Performance Standards

- Significant decrease in the number of Air Quality of Life Performance Standard exceedances:
 - Processing Facility
 - 9 Air QoL Standard Level Exceedances (approx. 1% of samples)
 - Dredge Corridor
 - 7 Air QoL Standard Level Exceedances (less than 1% of samples)
- Noise, Odor, Light or Navigation QoL

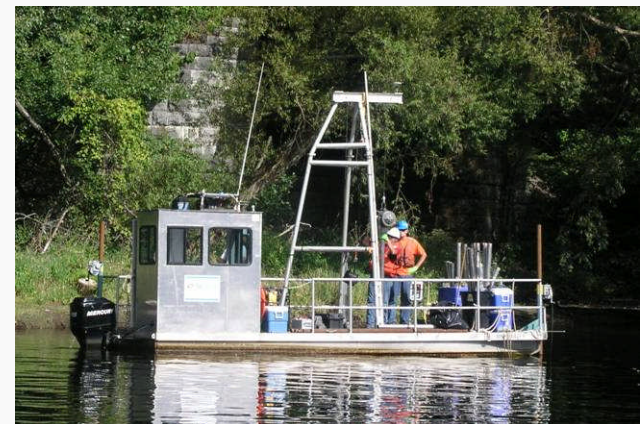




Compliance with Project Performance Standards



- Refined dredging process
 - Limit of two dredging passes – limits the number of “bucket bites”
 - Better delineation of the elevation of contamination (EoC)
 - On-going process
 - Design dredge prisms include an “overcut” to account for EoC uncertainty



Best Management Practices



- Refined Best Management Practices (BMPs)
 - Limiting the number of dredge passes, thereby limiting the number of “bucket bites”
 - Reducing the number of dredge platforms operating simultaneously
 - Stop dredging when clay / bedrock is encountered
 - Controlled bucket decanting
 - Begin placement of backfill material as soon as practicable
 - Limit tug boat propeller “wash”
 - “Proactive” approach to instituting additional BMPs for challenging areas
 - Oil absorbent and containment booms
 - Alternating dredge areas

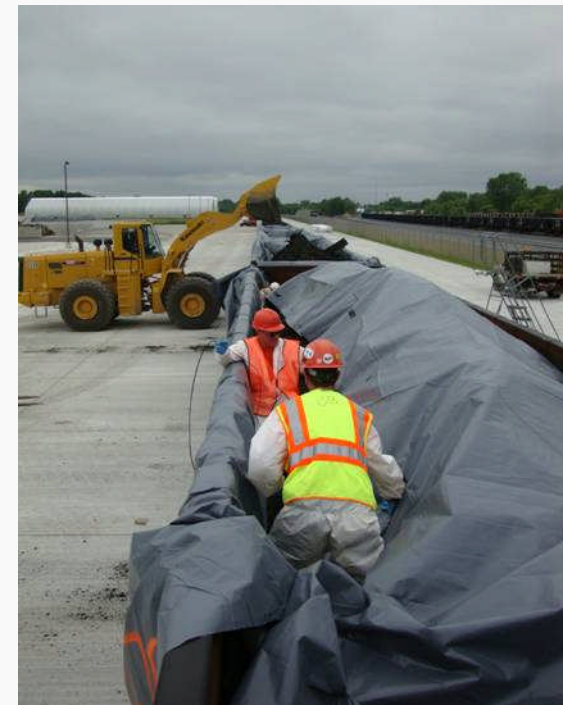
Sediment Processing Facility



Off-Season Activities



- Completion of off-site sediment disposal
- Processing Facility Improvements:
 - Construction of:
 - Second barge unloading station
 - Additional size separation equipment
 - Second gravity thickener
 - Expansion of sediment staging areas



Processing Facility Improvements



Construction of a Second Barge Unloading Station

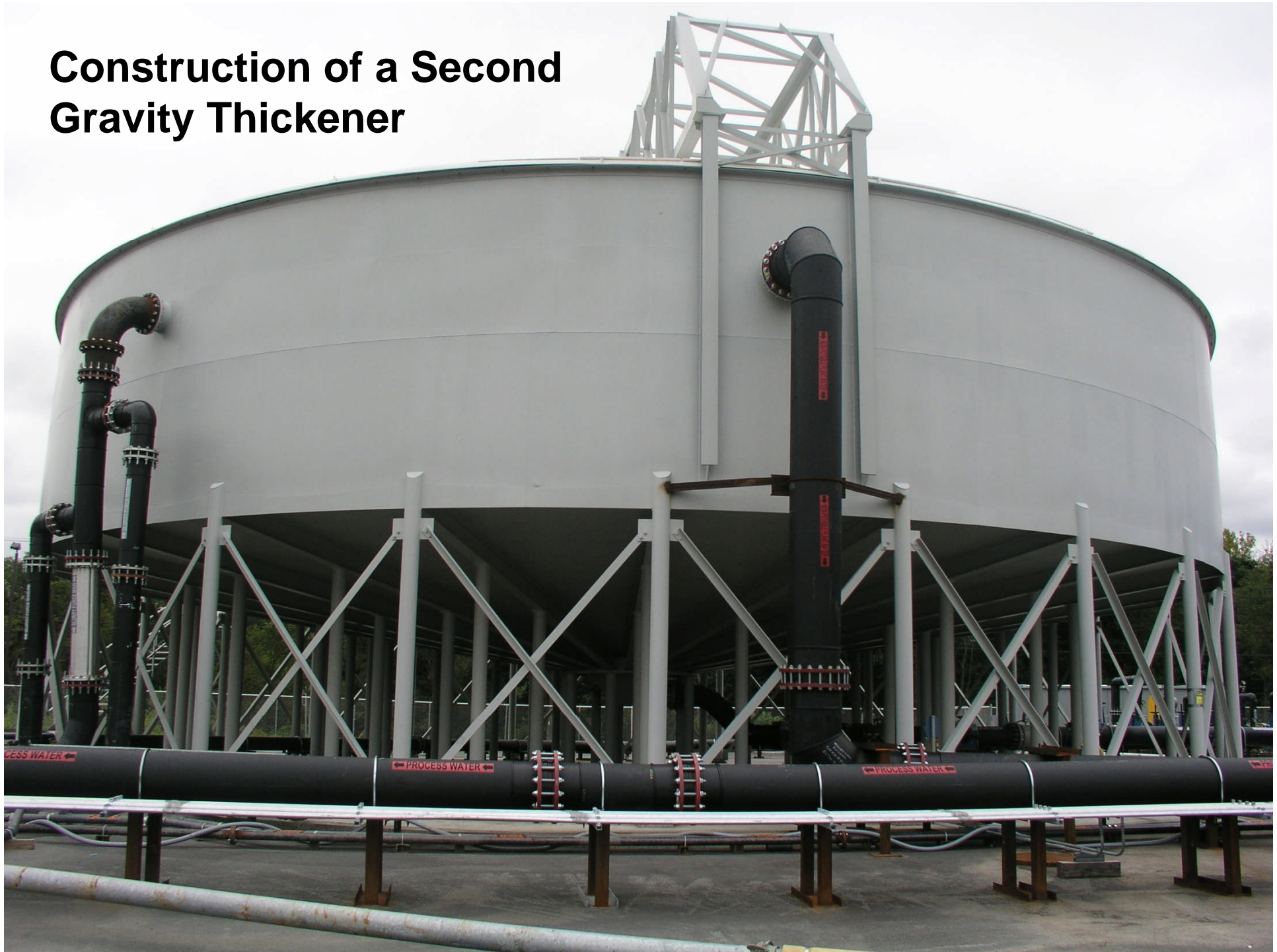


Construction of Additional Size Separation Equipment



19 13:14

Construction of a Second Gravity Thickener



2012 Dredging Season

- Resume dredging operations in CU 26
- GE anticipates dredging to CU 55 and removing more than 450,000 C.Y. of sediment
- Will include adaptive management changes based upon “lessons learned” in 2012
 - Update to 2011 documents, including:
 - Community Health and Safety Plan
 - Remedial Action Work Plan
 - Design documents
- West Griffin Island Area and Three Sisters Islands will be addressed





David King – Project Director

Gary Klawinski – Project Manager

Larisa Romanowski – Community Involvement Coordinator

Hudson River Field Office: (518) 747-4389

www.epa.gov/hudson

www.hudsondredgingdata.com

www.hudsoncag.ene.com

GE's Hudson River Team: 1-888-596-3655

www.hudsondredging.com

